

# KYMETA™ U8 PRODUCTS ACCESSORY GUIDE

## FOR U8 PRODUCTS BETA PROGRAM

This document covers Kymeta™ u8 accessories that will be available for the u8 products at launch. Refer to the 700-00107-000 *Kymeta u8 products integrator guide* for additional technical details and drawings. Kymeta will revise this document as more accessories become available.

### Vehicle mount kit

PRODUCT CODE	PRODUCT DESCRIPTION
U8ACC-00003-0	ACCESSORY, U8 VEHICLE MOUNT

Use this vehicle mount kit to attach the u8 terminal or u8 ODU to a vehicle roof rack. This mount requires that the roof rack crossbars are less than 7.7 cm wide and the closest points on the forward/aft crossbars are 92.8 cm apart.

#### What's in the kit

- » Mounting rails
- » Hardware to secure the rails to the terminal or ODU
- » Clamps / hardware to secure the rails to the vehicle roof rack
- » Padlock
- » Installation instructions



### Vehicle power kit

PRODUCT CODE	PRODUCT DESCRIPTION
U8ACC-00001-0	ACCESSORY, U8 VEHICLE POWER, 25' (7.5 M) CABLES

Use this vehicle power kit to power the u8 terminal or u8 ODU from a vehicle battery.

#### What's in the kit

- » 25' power cable, 16' ground wire, 20' ACC wire
- » Ring terminals
- » 100 A circuit breaker and 5 A fuse with fuse holder
- » Abrasion resistant wire shielding

- » Cable ties and mounts
- » Installation instructions

## AC-to-DC power kit

PRODUCT CODE	PRODUCT DESCRIPTION
U8ACC-00002-0	ACCESSORY, AC-TO-DC POWER, 25' (7.5 M) CABLES

Use this AC-to-DC power kit to power the u8 terminal or u8 ODU from a 120/240 VAC wall outlet. The u8 terminal and u8 ODU are designed with a DC power system that accepts 12 VDC to 24 VDC with a maximum power draw for the system to be 600 W.

### What's in the kit

- » AC-to-DC power supply, 24 VDC/600 W output
- » Installation instructions

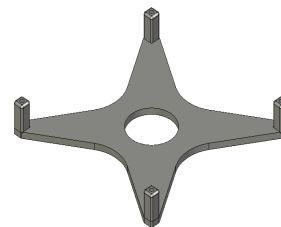
## Universal adapter plate

PRODUCT CODE	PRODUCT DESCRIPTION
U8ACC-00004-0	ACCESSORY, UNIVERSAL MOUNTING PLATE

This universal adapter plate can be used to modify an existing u7 mounting structure to accommodate a u8 terminal or u8 ODU or can be used for any static / stationary installation. The u8 terminal or u8 ODU dimensions with the shroud installed are 90 cm × 90 cm × 14.6 cm. The four mounting points are 41.7 cm apart, centered on the terminal. They have 15 mm of M10 × 1.25 threading, with a max hole depth of 20 mm. 2.9 cm deep channels that run along the direction of travel are integrated into the shroud to support a low-profile mounting system.

### What's in the kit

- » Mounting plate
- » Stand-off posts
- » Fasteners
- » Installation instructions



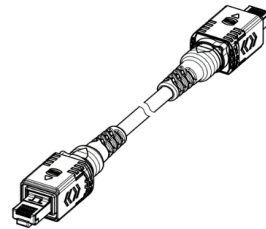
## u8 ODU RX, TX, and data cable kit

PRODUCT CODE	PRODUCT DESCRIPTION
U8ACC-00013-0	ACCESSORY, RX, TX, DATA FOR ODU, 25' (7.5 M) CABLES

Use this IP66 rated cable kit to attach your Kymeta u8 ODU to an external modem.

### What's in the kit

- » (2) LMR-240 N-Male to N-Male 7.5 m (25 ft.) cables
- » (1) RJ45 to RJ45 7.5 m (25 ft.) cable
- » Installation instructions



## Customer support

Submit your questions and comments to [product@kymetacorp.com](mailto:product@kymetacorp.com).